

<b>DTC</b>	<b>C1202 / 52</b>	<b>Brake Fluid Level Warning Switch Circuit</b>
------------	-------------------	---

## CIRCUIT DESCRIPTION

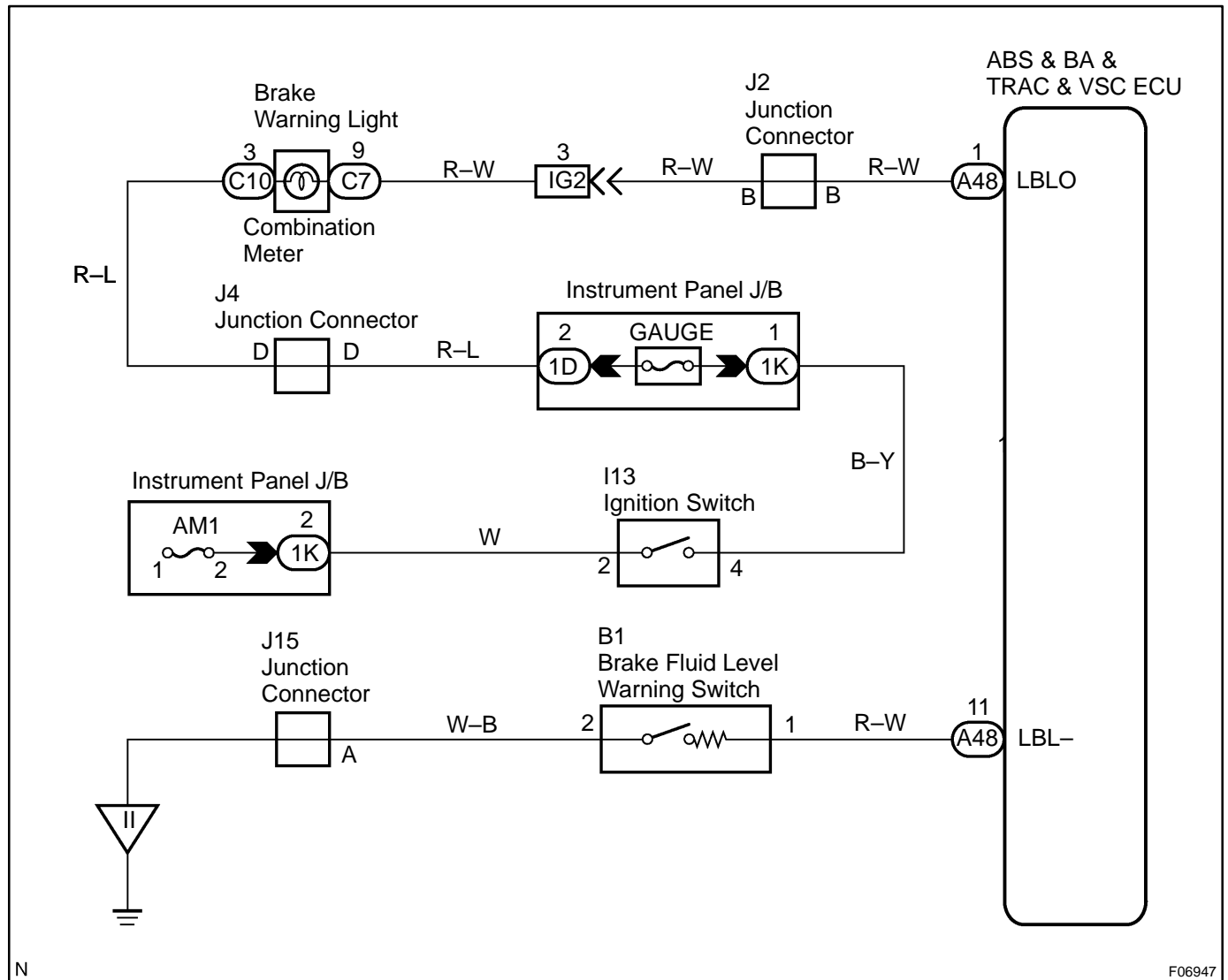
The brake fluid level warning switch sends the appropriate signal to the ECU when the brake fluid level drops.

DTC No.	DTC Detecting Condition	Trouble Area
C1202 / 52	<ul style="list-style-type: none"> <li>●ECU terminal IG1 voltage is 9.5 V to 17.2 V and open circuit for the brake fluid level warning switch circuit continues for 2 sec. or more.</li> <li>●While driving, the condition that the brake fluid low level signal is ON and the force compounded by the centrifugal force in lateral and the back and forth direction is 0.28 G or less continues for 60 sec.</li> <li>●With the vehicle stationary, the condition that the brake fluid low level signal is ON continues for 30 sec.</li> </ul>	<ul style="list-style-type: none"> <li>●Brake fluid level</li> <li>●Brake fluid level warning switch</li> <li>●Brake fluid level warning switch circuit</li> </ul>

### HINT:

Depress the parking brake pedal and also turns on the brake warning light but does not diagnose DTC No. C1202 / 52.

## WIRING DIAGRAM



**INSPECTION PROCEDURE**

<b>1</b>	<b>Check brake fluid level.</b>
----------	---------------------------------

**CHECK:**

Check the amount of fluid in the brake reservoir.

**NG**

**Check and repair brake fluid leakage and add fluid.**

**OK**

<b>2</b>	<b>Check brake fluid level warning switch (See page <a href="#">BE-99</a>).</b>
----------	---

**NG**

**Replace brake fluid level warning switch.**

**OK**

<b>3</b>	<b>Check for open circuit in all harness and components connected to brake fluid level warning light (See page <a href="#">IN-31</a>).</b>
----------	--

**NG**

**Repair or replace harness or connector.**

**OK**

**Check and replace ABS & BA & TRAC & VSC ECU.**